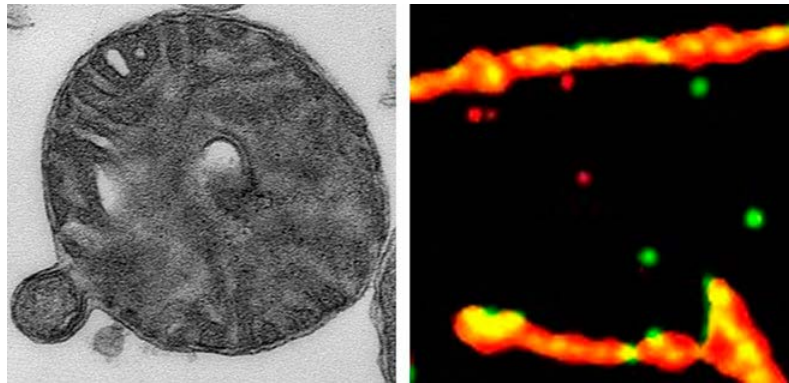




Mitochondrial derived vesicles provide new links for an old organelle



Long thought to be a highly isolated organelle working diligently in the production of essential cellular metabolites including ATP, recent work is uncovering new pathways of communication between the mitochondria and other cellular organelles. Direct interorganellar contacts are important for metabolite flux, and the regulation of these contacts is currently under intense investigation. In addition, our lab has shown that the mitochondria also package selected protein cargo into vesicular carriers for delivery to both the peroxisome and the late endosome. I will introduce emerging concepts in mitochondrial dynamics and plasticity, and focus the seminar on the molecular mechanisms and functional importance of mitochondrial vesicle transport

Dr. Heidi McBride

Canada Research Chair in Mitochondrial Cell Biology
Killam Research Scholar
Associate Professor
McGill University

Host: Dr. Helen McNeill

Date: Monday November 24th, 2014
Time: 4PM
Place: FitzGerald Building, Room 103